

Become a Member of BRMA

Be a part of the story.
Be a benefactor with tax-deductible contributions. **Be** updated via our quarterly newsletter

To learn more about BRMA, its role in preserving the B Reactor and how to become a member visit b-reactor.org

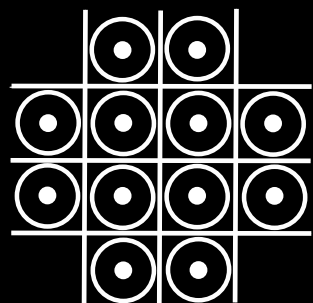
FOR RELATED SITES:

manhattanprojectbreactor.hanford.gov

atomicheritage.org

nps.gov/mapr

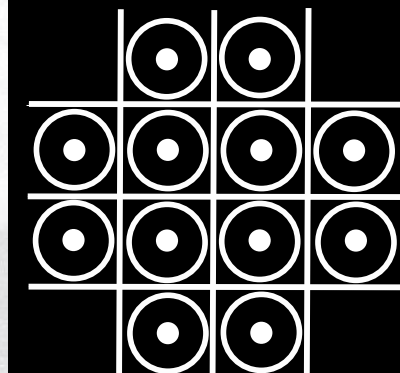
Tri-Cities Visitor Information:
VisitTRI-CITIES.com



B REACTOR
MUSEUM ASSOCIATION

B REACTOR

MUSEUM ASSOCIATION



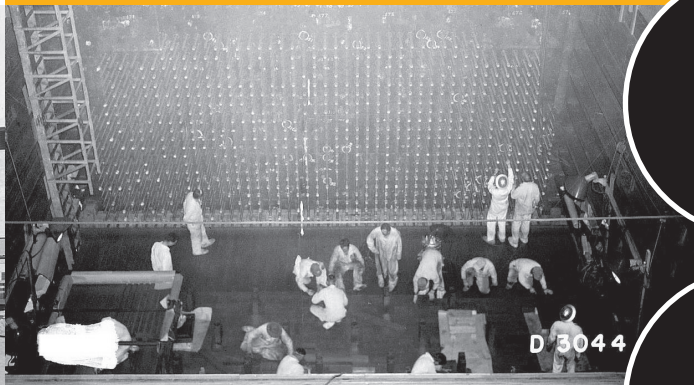
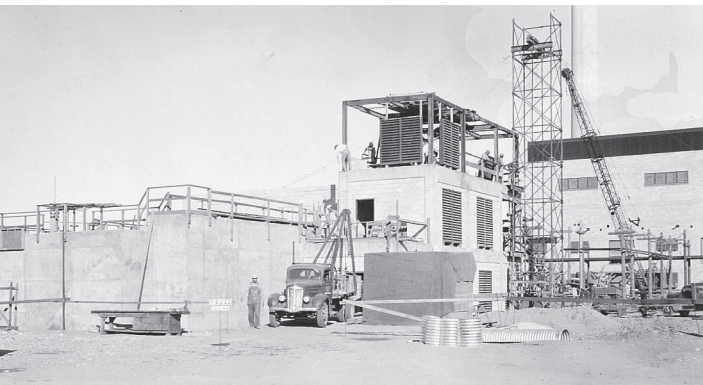
B Reactor Museum Association

Our mission is to educate the public about the scientific and technological endeavors, designs, facilities and processes employed at Hanford. We will address these from inception of the Manhattan Project through construction and operation, as well as considering their long-term impact and legacies. BRMA will carry out this mission primarily by supporting the Manhattan Project National Historical Park in collaboration with all appropriate federal, state and local government and private entities associated with the Park sites.

An Unprecedented
Marvel of Science,
Technology and
Engineering

b-reactor.org
facebook.com/BReactor

b-reactor.org
facebook.com/BReactor



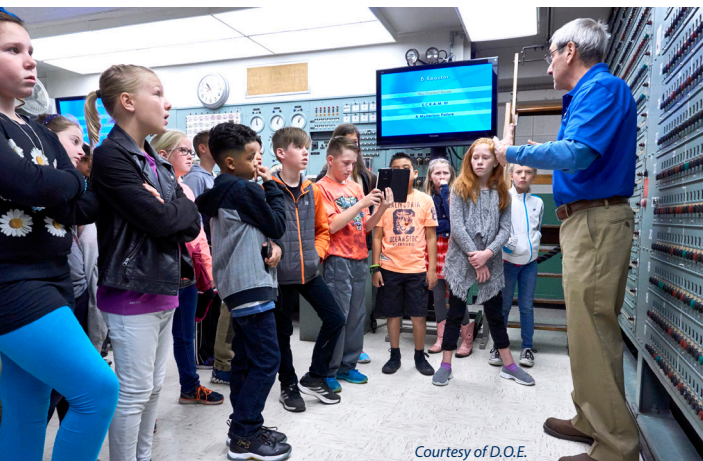
TOUR

Hanford's Historic B Reactor

The world's first large-scale plutonium-production reactor that ushered in the Atomic Age. It's now part of the Manhattan Project National Historical Park, which depicts the unique story of the massive World War II effort to build the world's first nuclear weapon that would help bring the war to an end.

BE A PART OF HISTORY!

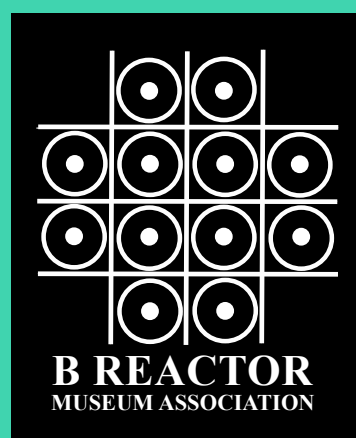
FREE TOURS • GROUP TOURS ALSO AVAILABLE
manhattanprojectbreactor.hanford.gov



Courtesy of D.O.E.

TIMELINE

Fermi Pile	December, 1942
B Reactor Construction	October, 1943
B Reactor Startup	September, 1944
Trinity Test	July 16, 1945
Hiroshima	August 6, 1945
Nagasaki	August 9, 1945
Surrender	August 14, 1945
Shutdown	March, 1946
B Reactor Restart	June, 1948
Shutdown	February, 1968



The B Reactor Museum Association (BRMA) is an all-volunteer grassroots organization established in 1990. It is a non-profit 501(c)(3), based in Richland, WA.

BRMA BEGAN THE EFFORT

to preserve B Reactor and see it opened to the public. In 2015, that culminated in the creation of the National Park, which includes Hanford, Los Alamos, and Oak Ridge. We encourage visitors to see all three sites to learn more of the Manhattan Project story.

